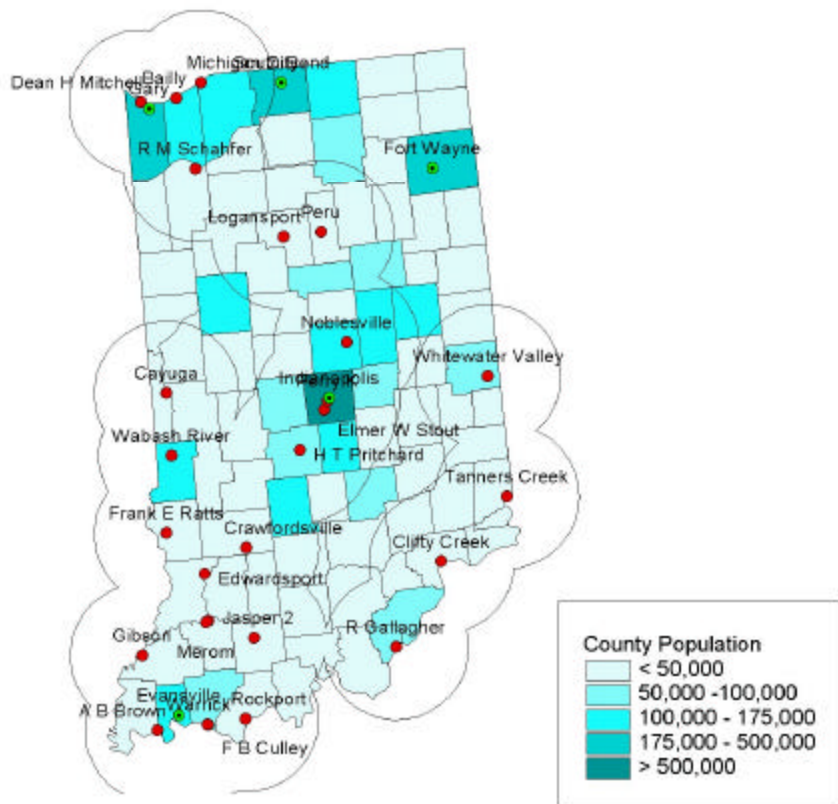


Indiana State Profile of Exposure to Coal-Fired Power Plants



Map Legend

Circles Represent a Thirty Mile Radius around Power Plants

Major Cities are Shown

State Profile

Total Number of Power Plants	24
Total Reported Releases	
Air	137,182,285
Land	10,572
Water	151
Total Lake Acres/River Miles under Mercury Fish Advisory	0 / 35.673
Total Ozone Non-Attainment Areas	2
Exposure Within 30 Mile Radius	
Total Population	4,576,826
Total Number of Children	1,127,326
Total Number of Children in Poverty	181,516
Total Number of Children With Asthma	62,469

Environmental Release Profile

Air Releases are for 2000

Land and Water Releases are for 1998

Indiana

Air Releases (tons except where noted)

Land Waste in Tons (on site (off site))

Plant Name	County	Total Reported Air Releases									Total Reported Land releases				Total Reported Water Releases
		NOx	SO2	CO2	PM2.5	PM10	VOCs	Acid Gases	Mercury (lbs)	Arsenic	Chromium	Nickel			
A B Brown	Posey	3,249,267	6,865	6,864	3,234,855	179	416	40	227	72	190	0 (0)	10 (0)	19 (0)	0
Bailly	Porter	3,291,543	20,825	5,144	3,265,062	103	196	74	242	59	55	0 (0)	4 (0)	3 (0)	0
Cayuga	Vermillion	6,831,533	10,315	65,734	6,752,965	335	736	87	1,695	179	490	12 (0)	39 (0)	75 (0)	101
Clifty Creek	Jefferson	8,763,887	31,883	42,678	8,686,025	1,109	1,247	84	1,971	547	380	4 (0)	29 (0)	18 (0)	4
Dean H Mitchell	Lake	2,379,073	3,145	6,365	2,369,299	85	123	37	103	67	51	0 (0)	4 (0)	- (-)	0
Edwardsport	Knox	854,369	2,857	10,794	840,477	32	71	10	160	37	12	0 (0)	0 (0)	- (-)	0
Elmer W Stout	Marion	4,004,694	6,433	40,311	3,955,757	469	1,036	50	1,107	154	35	0 (0)	0 (0)	0 (0)	10
F B Culley	Warrick	3,306,476	7,387	11,737	3,286,710	160	375	36	231	82	222	13 (0)	8 (0)	22 (0)	0
Frank E Ratts	Sullivan	8,649,860	16,192	16,820	8,615,208	441	975	101	565	221	282	0 (0)	14 (0.1)	40 (0.1)	1
Gibson	Gibson	22,228,953	47,817	171,504	22,003,355	920	2,028	254	3,994	624	2,133	138 (0)	112 (0)	237 (0)	0
HT Pritchard	Morgan	1,791,938	4,443	17,663	1,768,878	223	490	21	443	64	72	0 (0)	0 (0)	31 (0)	2
Merom	Pike	1,916,828	4,522	23,050	1,888,372	79	175	23	685	80	807	37 (0)	65 (6)	85 (5)	0
Michigan City	La Porte	3,150,561	7,838	11,298	3,131,016	24	33	84	292	108	95	0 (0)	0.1 (4)	- (-)	0
Noblesville	Hamilton	462,216	2,145	6,874	453,060	22	47	6	83	19	3	0 (0)	0 (0)	- (-)	0
Perry K	Marion	26,106	43	18	26,043	1	2	0	0	0	0	0 (0)	0 (0)	0 (0)	0
Petersburg	Pike	13,852,440	22,496	42,055	13,784,650	725	1,636	171	1,432	583	751	15 (2)	53 (10)	87 (16)	11
R Gallagher	Floyd	3,636,909	7,514	59,008	3,568,568	116	256	38	1,526	143	119	0 (0)	14 (0)	- (-)	0
R M Schahfer	Jasper	11,322,815	21,074	34,935	11,265,361	346	646	186	613	334	840	20 (0)	48 (0)	46 (0)	10
Rockport	Spencer	18,786,721	36,995	63,389	18,684,279	592	862	254	942	926	946	5 (0.1)	20 (32.6)	34 (13)	7
Tanners Creek	Dearborn	6,083,074	32,657	67,447	5,979,460	170	377	98	3,036	236	400	16 (0)	26 (24)	23 (10)	5
Wabash River	Vigo	5,605,538	11,414	58,472	5,531,139	227	501	67	3,945	192	2,133	138 (0)	112 (0)	237 (0)	0
Warrick	Warrick	6,267,400	18,151	91,387	6,154,590	400	1,028	67	2,176	0	514	20 (0.1)	31 (0.2)	55 (0.4)	0
Whitewater Valley	Wayne	700,084	1,449	12,074	686,093	36	87	8	373	32	42	0 (0)	0 (0)	- (-)	0
Total		137,162,285	324,460	865,621	135,931,222	6,793	13,345	1,797	25,840	4,758	10,572	416 (3)	585 (77)	989 (44)	151

Notes and Sources: All releases are given in tons per year except for mercury which is given in pounds per year. Total air releases is the sum of NOx, SO2, CO2, PM10, VOCs, acid gases, and mercury (PM2.5 is included in PM10). The specific land waste metals were chosen due to their potential to contaminate groundwater. Metals listed include metals and their compounds. The Total Reported Land Releases column does not reflect all solid waste generated from coal-fired power plants. Water releases include total releases from the Toxics Release Inventory (TRI). SO2, NOx, and CO2 emissions come from the EPA's Continuous Emissions Monitoring System data for 2000. Mercury is calculated by applying the mercury emission rates developed in "Mercury Falling" (Environmental Working Group, Clean Air Network, and NRDC, 1999) to the heat input reported in the EPA CEMS data for 2000. PM2.5, PM10, VOCs, and acid gas emission rates were calculated based on the Clean Air Network's data for 1998 emissions. The emission rates were applied to the heat input for 2000. All other data came from the Clean Air Network 1998 data. All calculations were done by MSB Energy Associates for the Clean Air Task Force.

Indiana Exposure Profile for Children Within 30 Miles of a Coal-Fired Power Plant

Data Sources: U.S. Census Population Estimates for 1997; "Estimated Prevalence and Incidence of Lung Disease by Lung Association Territory," American Lung Association, 2001 (data is for 1998).

Exposure from Plants in State

Plant	State	County	Exposed Population	Children Under 18	Children in Pediatric Poverty	Asthma
State Line	IN	Lake	620,087	167,771	31,928	8,986
Clifty Creek	IN	Jefferson	195,560	48,004	7,868	2,766
Tanners Creek	IN	Dearborn	125,879	31,726	4,215	1,886
Elmer W Stout	IN	Marion	1,442,219	345,090	55,762	20,000
H T Pritchard	IN	Morgan	1,121,924	262,511	44,928	14,836
Petersburg	IN	Pike	196,181	49,649	6,956	2,691
Bailly	IN	Porter	758,806	202,426	36,907	10,852
Dean H Mitchell	IN	Lake	700,572	187,800	34,650	10,071
Michigan City	IN	La Porte	596,793	156,758	26,872	8,452
Cayuga	IN	Vermillion	190,637	44,924	6,771	2,437
Edwardsport	IN	Knox	181,280	44,754	7,363	2,438
Noblesville	IN	Hamilton	1,430,802	346,004	60,019	19,364
R Gallagher	IN	Floyd	258,467	62,882	10,490	3,605
Wabash River	IN	Vigo	229,415	53,145	8,921	2,901
F B Culley	IN	Warrick	306,357	74,990	11,282	4,030
Whitewater Valley	IN	Wayne	218,521	55,290	9,572	2,893
Merom	IN	Pike	208,114	52,663	7,264	2,867
R M Schahfer	IN	Jasper	553,657	146,012	24,030	7,992
Gibson	IN	Gibson	245,944	59,844	9,546	3,160
A B Brown	IN	Posey	284,355	69,447	10,617	3,717
Rockport	IN	Spencer	284,095	69,620	9,920	3,777
Frank E Ratts	IN	Sullivan	210,381	49,419	9,114	2,653
Warrick	IN	Warrick	306,357	74,990	11,282	4,030