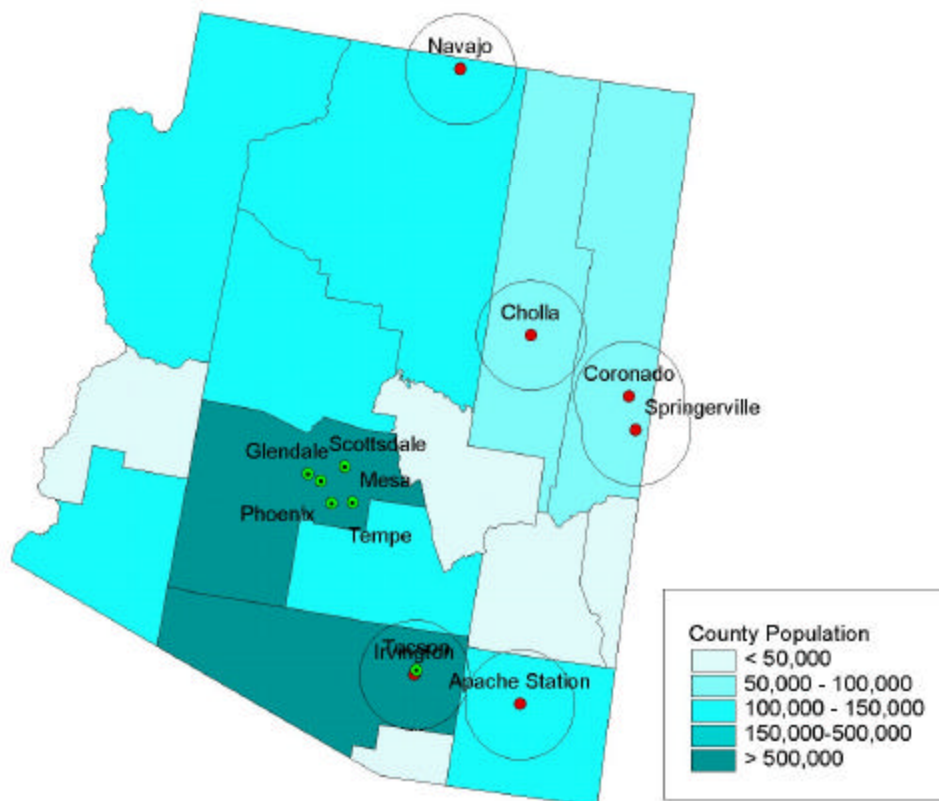


Arizona State Profile of Exposure to Coal-Fired Power Plants



Map Legend

Circles Represent a Thirty Mile Radius around Power Plants

Major Cities are Shown

State Profile

Total Number of Power Plants	6
Total Reported Releases	
Air	47,135,216
Land	3,011
Water	0
Total Lake Acres/River Miles under Mercury Fish Advisory	140 / 0
Total Ozone Non-Attainment Areas	1

Exposure Within 30 Mile Radius

Total Population	972,054
Total Number of Children	213,144
Total Number of Children in Poverty	71,133
Total Number of Children With Asthma	13,952

Environmental Release Profile

Air Releases are for 2000

Land and Water Releases are for 1998

Arizona

Air Releases (tons except where noted)

Land Waste in Tons (on site (off site))

Plant Name	County	Total Reported Air Releases	NOx	SO2	CO2	PM2.5	PM10	VOCs	Acid Gases	Mercury (lbs)	Total Reported Land releases	Arsenic	Chromium	Nickel	Total Reported Water Releases
Apache Station	Cochise	3,612,780	7,781	6,569	3,597,609	302	665	55	101	112	182	0 (0)	14 (0)	- (-)	0
Cholla	Navajo	8,481,083	13,781	17,896	8,441,970	3,330	7,002	117	318	366	308	0 (0)	9 (0)	9 (0)	0
Coronado	Apache	7,149,233	14,272	19,460	7,113,186	533	1,174	100	1,040	234	466	0 (0)	13 (0)	16 (0)	0
Irvington	Pima	1,432,829	2,803	3,418	1,426,410	31	80	42	76	19	13	0 (0)	0 (0)	- (-)	0
Navajo	Coconino	20,182,469	37,267	4,837	20,137,722	853	1,880	231	531	439	1,302	0 (0)	14 (0)	16 (0)	0
Springerville	Apache	6,276,822	11,715	19,049	6,245,527	174	400	96	35	0	740	9 (0)	26 (0)	- (-)	0
Total		47,135,216	87,619	71,229	46,962,424	5,222	11,202	642	2,100	1,169	3,011	9 (0)	75 (0)	40 (0)	0

Notes and Sources: All releases are given in tons per year except for mercury which is given in pounds per year. Total air releases is the sum of NOx, SO2, CO2, PM10, VOCs, acid gases, and mercury (PM2.5 is included in PM10). The specific land waste metals were chosen due to their potential to contaminate groundwater. Metals listed include metals and their compounds. The Total Reported Land Releases column does not reflect all solid waste generated from coal-fired power plants. Water releases include total releases from the Toxics Release Inventory (TRI). SO2, NOx, and CO2 emissions come from the EPA's Continuous Emissions Monitoring System data for 2000. Mercury is calculated by applying the mercury emission rates developed in "Mercury Falling" (Environmental Working Group, Clean Air Network, and NRDC, 1999) to the heat input reported in the EPA CEMS data for 2000. PM2.5, PM10, VOCs, and acid gas emission rates were calculated based on the Clean Air Network's data for 1998 emissions. The emission rates were applied to the heat input for 2000. All other data came from the Clean Air Network 1998 data. All calculations were done by MSB Energy Associates for the Clean Air Task Force.

Arizona Exposure Profile for Children Within 30 Miles of a Coal-Fired Power Plant

Data Sources: U.S. Census Population Estimates for 1997; "Estimated Prevalence and Incidence of Lung Disease by Lung Association Territory," American Lung Association, 2001 (data is for 1998).

Exposure from Plants in State

Plant	State	County	Exposed Population	Children Under 18	Children in Pediatric Poverty	Asthma
Cholla	AZ	Navajo	46,113	14,101	6,019	915
Irvington	AZ	Pima	818,301	175,979	56,325	11,522
Apache Station	AZ	Cochise	36,519	9,147	3,182	571
Navajo	AZ	Coconino	24,459	6,406	2,054	411
Coronado	AZ	Apache	15,856	5,803	3,095	336
Springerville	AZ	Apache	16,008	5,859	3,125	339